

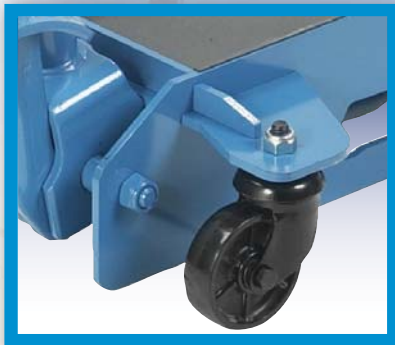
# OTC® 6- & 10-Ton Heavy-Duty Service Jacks

## Unique, innovative design featuring...

- New “OTC Family” look.
- Ergonomic handle for user comfort and easy mobility.
- CE marked – ASME/PALD tested.
- Minimum clearance of 6-11/16" (6-Ton).

**No. 5206** – 6-Ton HD Service Jack.

**No. 5210** – 10-Ton HD Service Jack.



Polyamide wheels are superior to cast wheels due to their high mechanical strength and durability:

- Demonstrate exceptional resistance to wear and tear.
- Will not damage garage floors, do not rust and are quiet in operation.

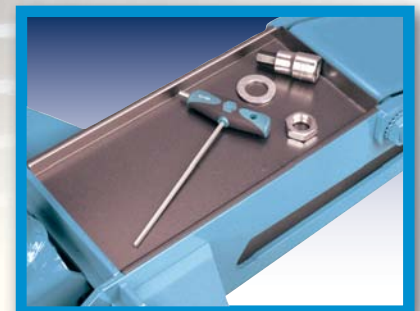


Foot pedal for quick approach of the lifting saddle to load.

**No. 5210** – 10-Ton HD Service Jack.



**No. 5206** – 6-Ton HD Service Jack.



Built-in tray for fasteners and tools.

HD Model	Capacity (tons)	Overall Length	Overall Width	Min. Height	Max. Height	Weight
<b>5206</b>	6-Ton	51-3/16"	16-3/4"	6-11/16"	22-5/8"	181 lbs.
<b>5210</b>	10-Ton	63"	16-3/4"	6-11/16"	22-5/8"	246 lbs.

09-47 ©2009 SPX, All rights reserved. Because of ongoing product improvements, we reserve the right to change design, materials, and specifications without notice. Product shipped may differ from photo(s) shown.



800-533-6127

www.otctools.com

